



# Farmers Electric Cooperative

A Touchstone Energy® Cooperative 

301 N. Hillcrest  
Sulphur Springs, TX 75482

2000 I-30 E  
Greenville, TX 75402

108 W. Marble  
Wylie, TX 75098



February 16, 2018

Office of Hopkins County Judge  
The Honorable Robert Newsom  
Post Office Box 288  
Sulphur Springs, TX 75483

**Farmers Electric Cooperative Member: Hayli Fite**  
**Service Order Number: 1802002276**

**Dear Judge Newsom,**

Farmers Electric Cooperative, Inc. is requesting permission to re-route existing electrical power distribution facilities across County Road 1170, which is located approximately 285 feet west of County Road 1158, in Hopkins County, Texas.

Site location map and construction sketches are enclosed. The construction sketch details the proposed work. All road crossing will have a minimum vertical clearance of 22 feet.

**If you have any questions, please contact your field engineering representative Joshua Eden at 903-453-0734 office, or 903-268-6873 mobile.**

**Please send approval back to our engineering group at: [tgriffin@farmersselectric.coop](mailto:tgriffin@farmersselectric.coop)**

Sincerely,

*Joshua Eden*

Engineering Assistant  
[jeden@farmersselectric.coop](mailto:jeden@farmersselectric.coop)

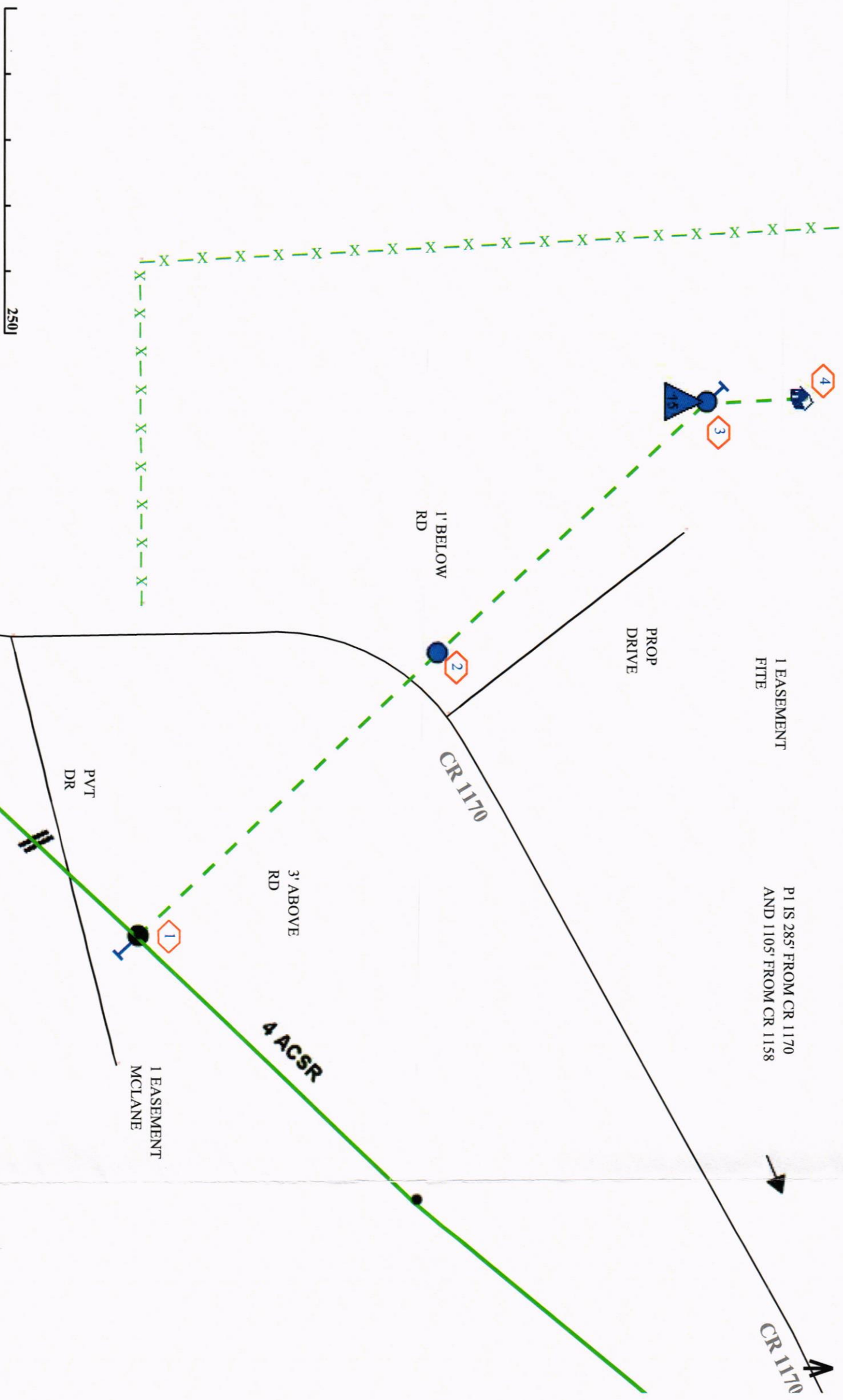
Enclosures

Submitted by:  
Tricia Griffin  
Field Engineering Coordinator  
Office: 903-453-0563 Fax: 903-453-0663  
[tgriffin@farmersselectric.coop](mailto:tgriffin@farmersselectric.coop)

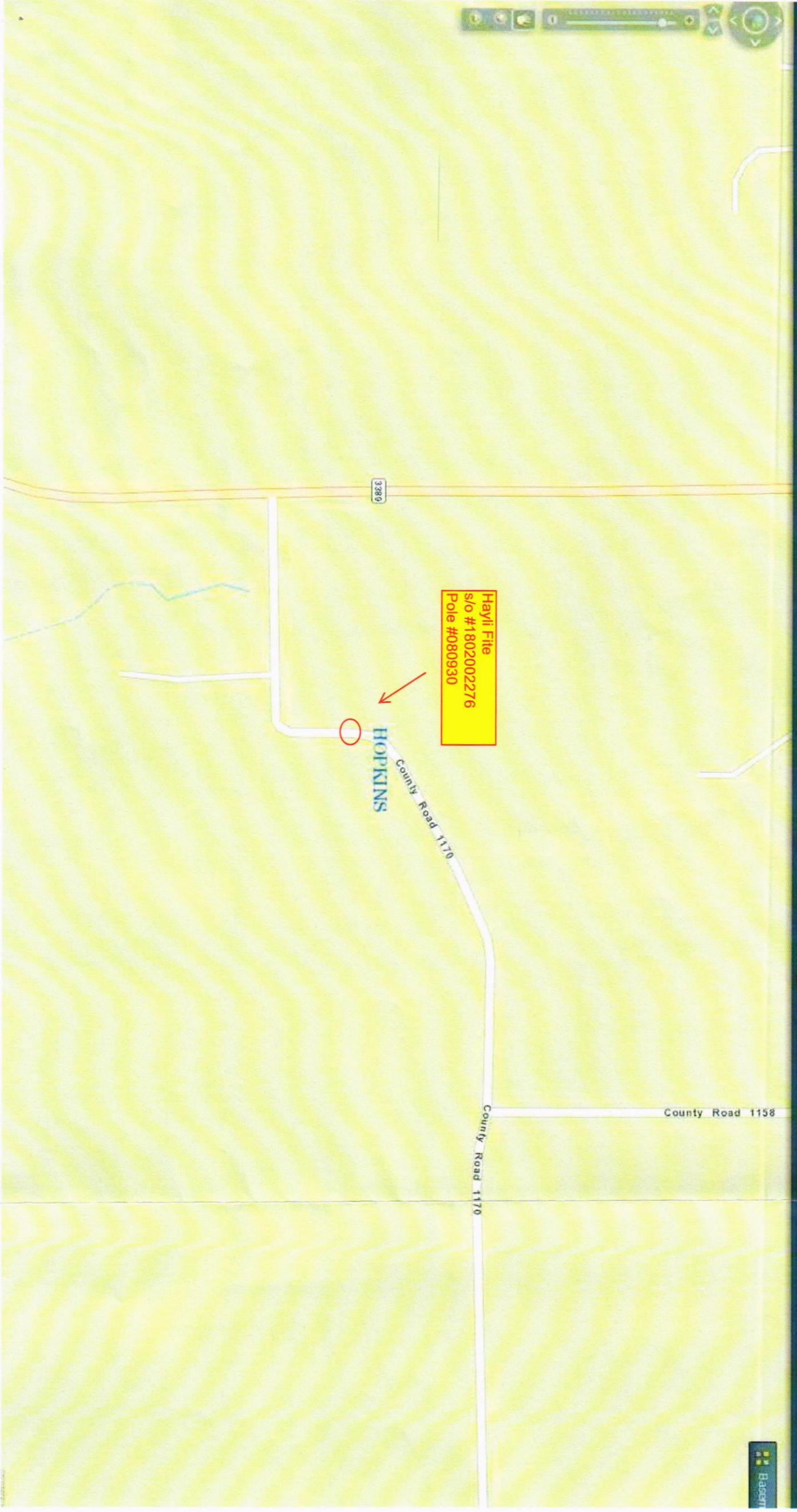
Approved  Denied

Date: \_\_\_\_\_

County Comments: \_\_\_\_\_







Hayli Fite  
s/o #1802002276  
Pole #080930

HOPKINS

3386

County Road 1158

County Road 1170

County Road 1170